

JUPITER III

FARMTEC stainless steel heated waterer / drinker

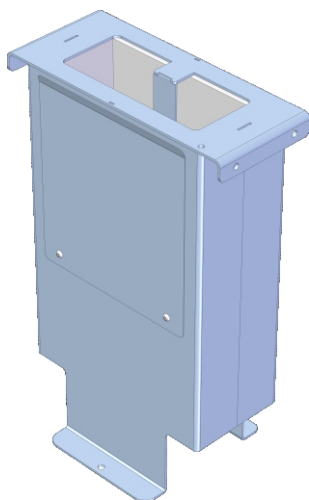


FARMTEC stainless steel heated waterer / drinker consist of two separate parts - from waterer foot and the waterer body.

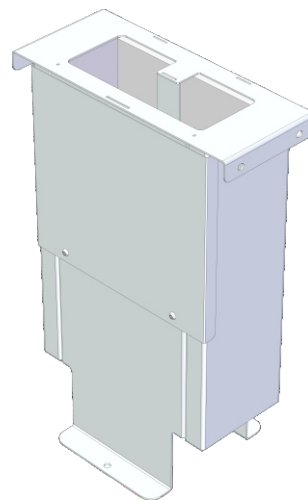
The foot of the waterer is made of stainless steel or hot-dip galvanized, in two mounting options - on or into the concrete.

The waterer body consists of a hot-dip galvanized frame and a stainless steel water tub.

We ship the waterers disassembled (the foot and the body of the waterer are separated). The assembly of the waterer is simple, you can choose the left-hand or right-hand design of the waterer, depending on the location of the outlet hole and also set the opening direction of the float chamber cover.

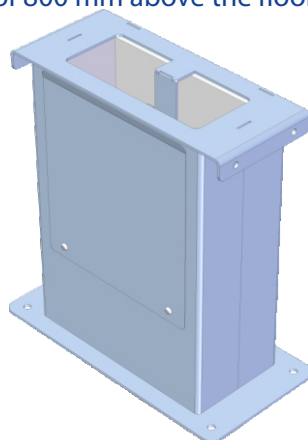


waterer foot - type Z
hot-dip galvanized welded part of waterer for mounting **on concrete** with a fixed waterer height of 800 mm above the floor

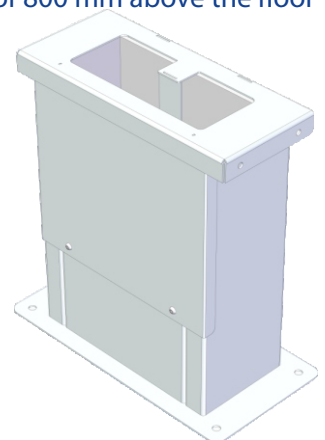


waterer foot - type N
stainless steel welded part of waterer for mounting **on concrete** with a fixed waterer height of 800 mm above the floor

waterer foot - type Z
hot-dip galvanized welded part of waterer for mounting **into concrete**



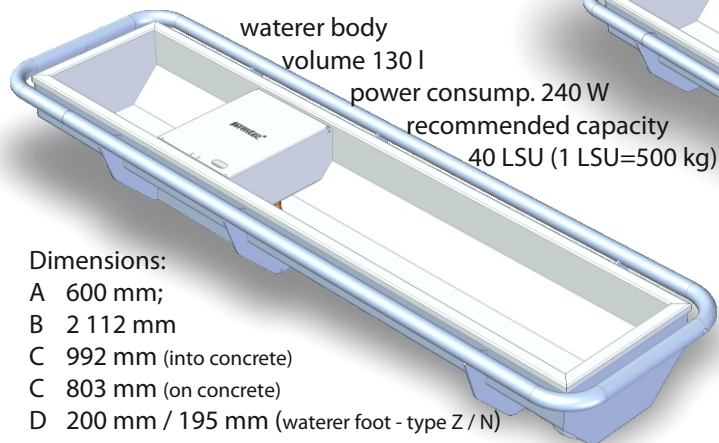
waterer foot - type N
stainless steel welded part of waterer for mounting **into concrete**



MADE BY FARMTEC



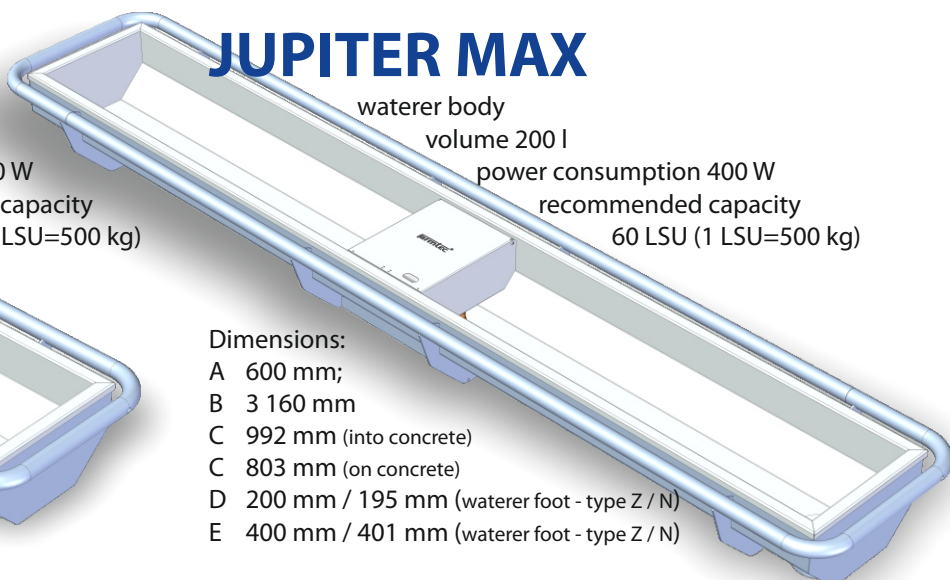
JUPITER III



Dimensions:

- A 600 mm;
- B 2 112 mm
- C 992 mm (into concrete)
- C 803 mm (on concrete)
- D 200 mm / 195 mm (waterer foot - type Z / N)
- E 400 mm / 401 mm (waterer foot - type Z / N)

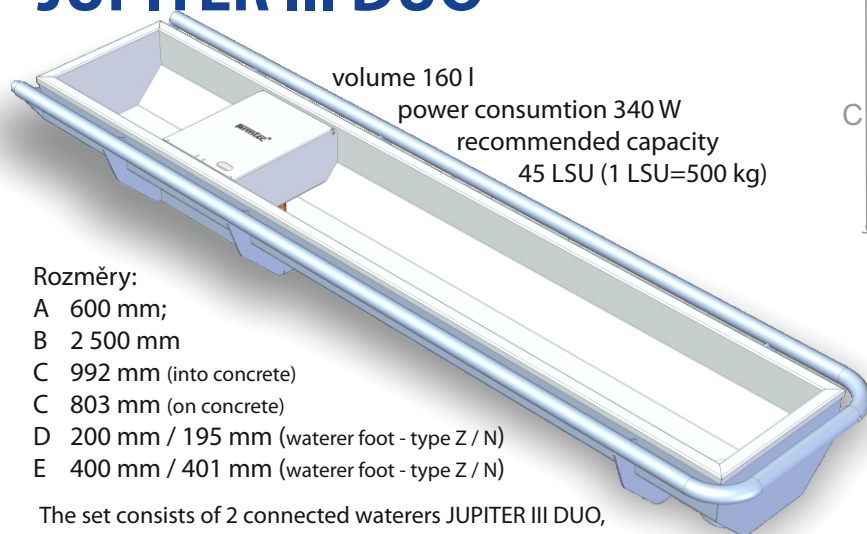
JUPITER MAX



Dimensions:

- A 600 mm;
- B 3 160 mm
- C 992 mm (into concrete)
- C 803 mm (on concrete)
- D 200 mm / 195 mm (waterer foot - type Z / N)
- E 400 mm / 401 mm (waterer foot - type Z / N)

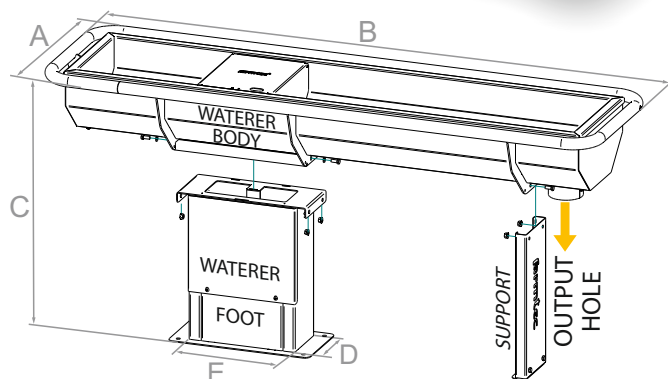
JUPITER III DUO



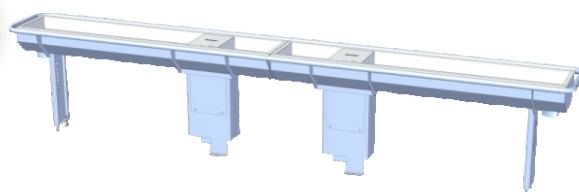
Rozměry:

- A 600 mm;
- B 2 500 mm
- C 992 mm (into concrete)
- C 803 mm (on concrete)
- D 200 mm / 195 mm (waterer foot - type Z / N)
- E 400 mm / 401 mm (waterer foot - type Z / N)

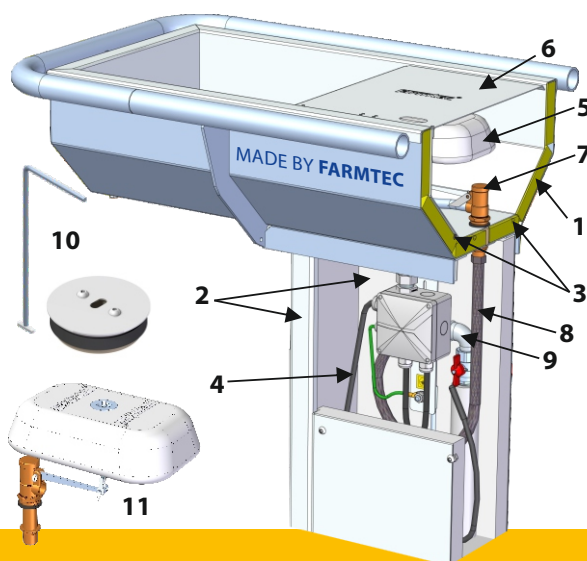
The set consists of 2 connected waterers JUPITER III DUO, the length of the set is 5 m, volume 320 l



JUPITER, JUPITER DUO, JUPITER MAX



voltage 230 V, waterer foot power consumption 16 W (at 5 °C), water flow (at 0.3 MPa) 50 liters, water supply G 1/2" is in the foot of the waterer, the power supply is led to the distribution board in the foot of the waterer, the bottom of the waterer is equipped with a 110 mm diameter plug, IP degree of protection: IP 55



- 1 - thermal insulation of the bottom and the walls of the waterer
- 2 - thermal insulation of the waterer's foot
- 3 - heating cable at the bottom of the waterer
- 4 - self-regulating heating cable on the water inlet (the water supply does not freeze)
- 5 - float (easy water level adjustment)
- 6 - float chamber cover (opens manually, no tools required)
- 7 - inlet valve (up to 50 l / min at a pressure of 0.3 MPa)
- 8 - connecting hose for a high-pressure water supply to the valve
- 9 - elbow for connection to a ball valve on the water supply
- 10 - drain plug (diameter 110 mm) with hook
- 11 - detail of a float with an inlet valve
- 12 - High-pressure water outlet (drains water out the waterer)

