

TRITON III

FARMTEC stainless steel heated waterer / drinker

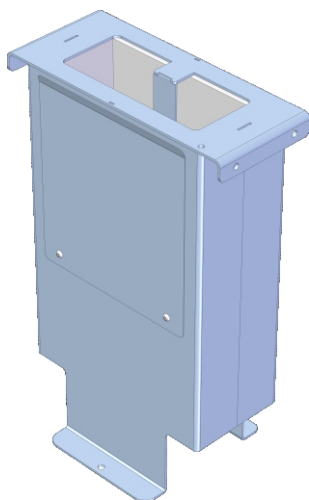


FARMTEC stainless steel heated waterer / drinker consist of two separate parts - from waterer foot and the waterer body.

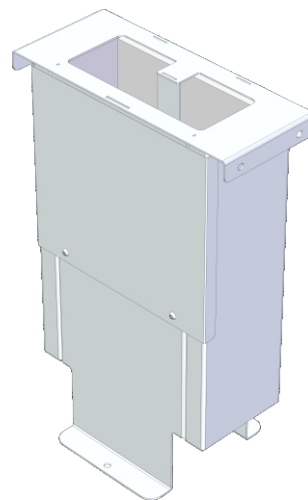
The foot of the waterer is made of stainless steel or hot-dip galvanized, in two mounting options - on or into the concrete.

The waterer body consists of a hot-dip galvanized frame and a stainless steel water tub.

We ship the waterers disassembled (the foot and the body of the waterer are separated). The assembly of the waterer is simple, you can choose the left-hand or right-hand design of the waterer, depending on the location of the outlet hole and also set the opening direction of the float chamber cover.

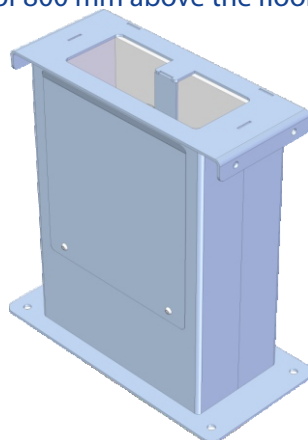


waterer foot - type Z
hot-dip galvanized
welded part of waterer
for mounting **on concrete**
with a fixed waterer height
of 800 mm above the floor

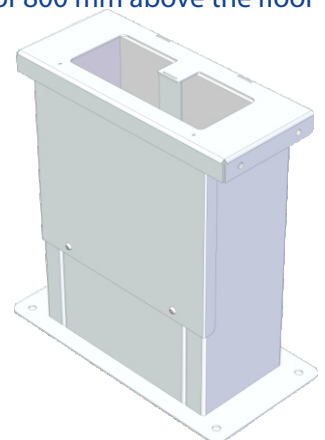


waterer foot - type N
stainless steel
welded part of waterer
for mounting **on concrete**
with a fixed waterer height
of 800 mm above the floor

waterer foot - type Z
hot-dip galvanized
welded part of waterer
for mounting
into concrete



waterer foot - type N
stainless steel
welded part of waterer
for mounting
into concrete



MADE BY FARMTEC



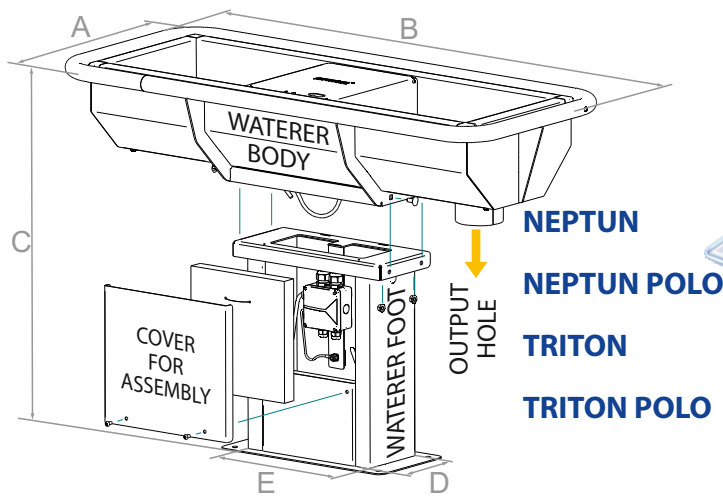
TRITON III

waterer body
volume 38 l
power consumption 120 W
recommended
capacity 30 LSU
(1 LSU=500 kg)

Dimensions:

A 385 mm;
B 1145 mm
C 955 mm (into concrete)
C 766 mm (on concrete)
D 200 mm / 195 mm (waterer foot - type Z / N)
E 400 mm / 401 mm (waterer foot - type Z / N)

voltage 230 V, waterer foot power consumption 16 W (at 5° C), water flow (at 0.3 MPa) 50 liters, water supply G 1/2" is in the foot of the waterer, power supply is led to the distribution board in the foot of the waterer, the bottom of the waterer is equipped with a 110 mm diameter plug, IP degree of protection: IP 55

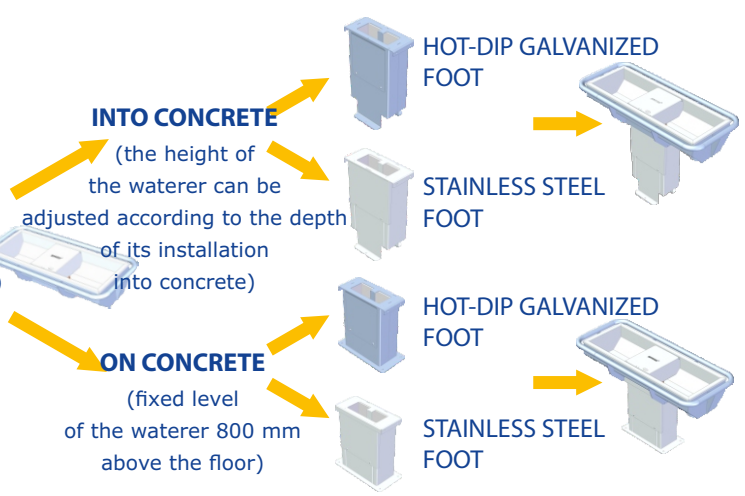


TRITON III POLO

waterer body
volume 25 l
power consumption 80 W
recommended
capacity 15 LSU
(1 LSU=500 kg)

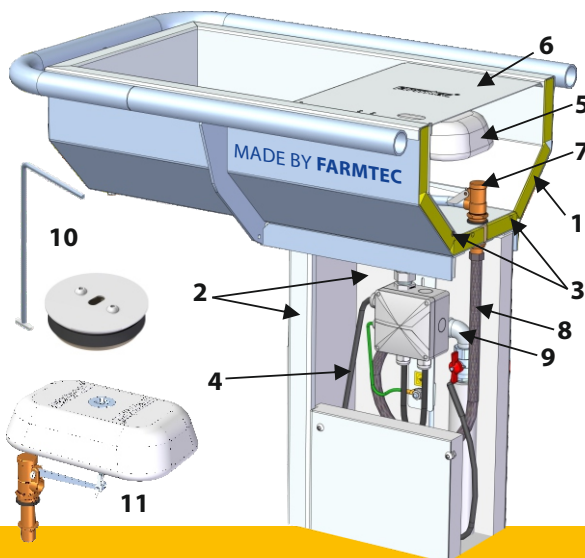
Dimensions:

A 385 mm;
B 1025 mm
C 955 mm (into concrete)
C 766 mm (on concrete)
D 200 mm / 195 mm (waterer foot - type Z / N)
E 400 mm / 401 mm (waterer foot - type Z / N)



Waterer components – KG elbow for the drain hole, float with an inlet valve, elbow for connection to a ball valve on the water supply, connecting hose between the filling valve and the elbow at the ball valve, heating cable to the foot of the waterer, wiring box for power connection (230 V), drain plug with a hook.

Additional waterer equipment – mounting kit for a high-pressure water outlet from the water trough with 1/2" quick fit coupling on the hose.



- 1 - thermal insulation of the bottom and the walls of the waterer
- 2 - thermal insulation of the waterer's foot
- 3 - heating cable at the bottom of the waterer
- 4 - self-regulating heating cable on the water inlet (the water supply does not freeze)
- 5 - float (easy water level adjustment)
- 6 - float chamber cover (opens manually, no tools required)
- 7 - inlet valve (up to 50 l / min at a pressure of 0.3 MPa)
- 8 - connecting hose for a high-pressure water supply to the valve
- 9 - elbow for connection to a ball valve on the water supply
- 10 - drain plug (diameter 110 mm) with hook
- 11 - detail of a float with an inlet valve
- 12 - High-pressure water outlet (drains water out the waterer)

