

NEPTUN III

FARMTEC stainless steel heated waterer / drinker

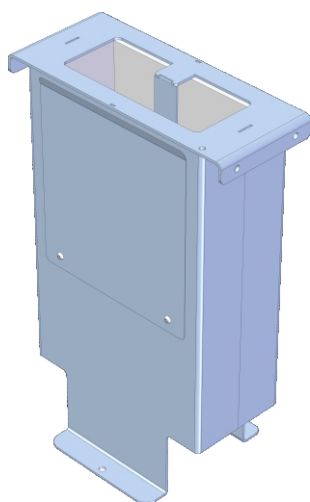


FARMTEC stainless steel heated waterer / drinker consist of two separate parts - from waterer foot and the waterer body.

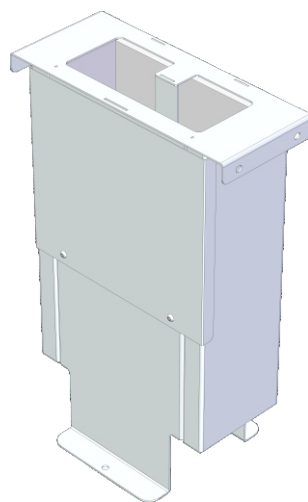
The foot of the waterer is made of stainless steel or hot-dip galvanized, in two mounting options - on or into the concrete.

The waterer body consists of a hot-dip galvanized frame and a stainless steel water tub.

We ship the waterers disassembled (the foot and the body of the waterer are separated). The assembly of the waterer is simple, you can choose the left-hand or right-hand design of the waterer, depending on the location of the outlet hole and also set the opening direction of the float chamber cover.

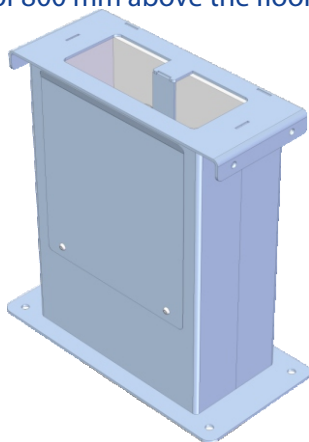


waterer foot - type Z
hot-dip galvanized welded part of waterer for mounting **on concrete** with a fixed waterer height of 800 mm above the floor

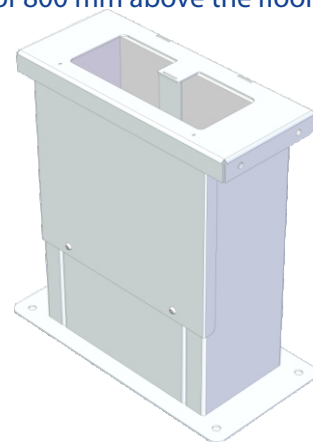


waterer foot - type N
stainless steel welded part of waterer for mounting **on concrete** with a fixed waterer height of 800 mm above the floor

waterer foot - type Z
hot-dip galvanized welded part of waterer for mounting **into concrete**



waterer foot - type N
stainless steel welded part of waterer for mounting **into concrete**

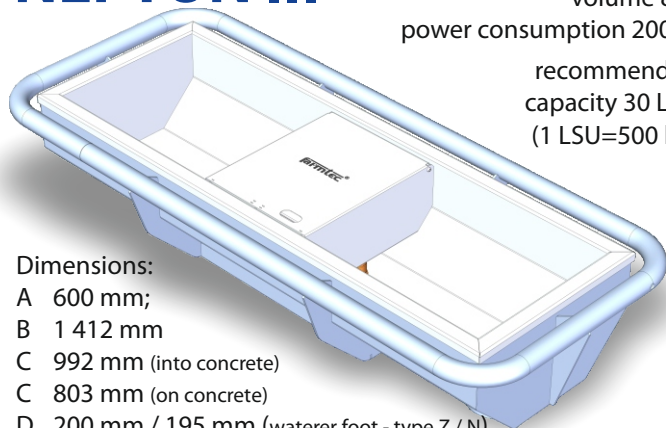


MADE BY FARMTEC



NEPTUN III

waterer body
volume 80 l
power consumption 200 W
recommended
capacity 30 LSU
(1 LSU=500 kg)

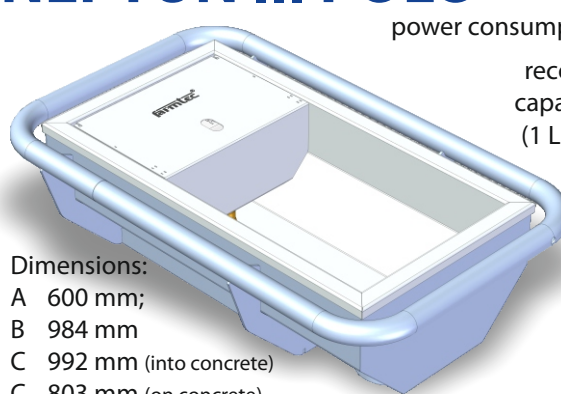


Dimensions:

- A 600 mm;
- B 1 412 mm
- C 992 mm (into concrete)
- C 803 mm (on concrete)
- D 200 mm / 195 mm (waterer foot - type Z / N)
- E 400 mm / 401 mm (waterer foot - type Z / N)

NEPTUN III POLO

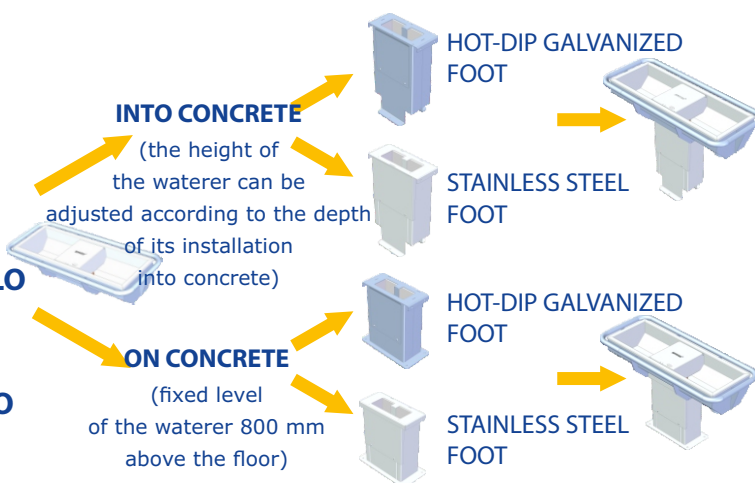
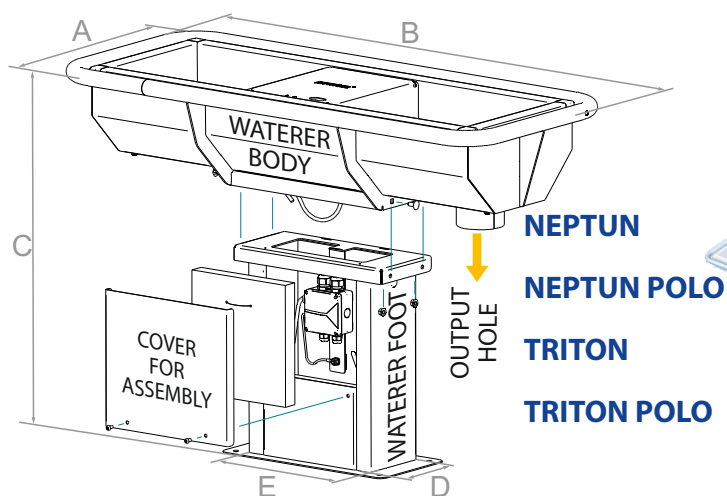
waterer body
volume 52 l
power consumption 100 W
recommended
capacity 15 LSU
(1 LSU=500 kg)



Dimensions:

- A 600 mm;
- B 984 mm
- C 992 mm (into concrete)
- C 803 mm (on concrete)
- D 200 mm / 195 mm (waterer foot - type Z / N)
- E 400 mm / 401 mm (waterer foot - type Z / N)

voltage 230 V, waterer foot power consumption 16 W (at 5 ° C), water flow (at 0.3 MPa) 50 liters, water supply G 1/2" is in the foot of the waterer, power supply is led to the distribution board in the foot of the waterer, the bottom of the waterer is equipped with a 110 mm diameter plug, IP degree of protection: IP 55



Waterer components – KG elbow for the drain hole, float with an inlet valve, elbow for connection to a ball valve on the water supply, connecting hose between the filling valve and the elbow at the ball valve, heating cable to the foot of the waterer, wiring box for power connection (230 V), drain plug with a hook.

Additional waterer equipment – mounting kit for a high-pressure water outlet from the water trough with 1/2" quick fit coupling on the hose.

