

THE ULTIMATE HOME FOR HEALTHY CHICKENS.

Trusted by
100+
farmers



THE MOBILE CHICKENWAGON

WEEKLY FRESH GRASS,
HEALTHY EGGS AND PERFECT
FOR IMMEDIATE MARKETING.



About us

The ultimate mobile home for chickens, that's Chickenwagon in a nutshell. But what is our story? What do we believe in? Meet team Wijkamp Farming Solutions.

How it all started...

In 2018, the concept of the Chickenwagon took more shape when Rico Wijgergangs and Stijn van de Bovenkamp combined their strengths within the agricultural sector and technology. Happy chickens lay healthier eggs - that is our motto. Wijkamp Farming Solutions has about ten years of experience in the agricultural sector and technical applications in particular.

The mobile Chickenwagon

In the mobile Chickenwagon chicken can show its natural behaviour. By nature, a chicken always scavenges its own meal, rolls in the sand to keep its plumage clean and roams at night with the rest of the chickens. (Important advantages of the mobile Chickenwagon: no black out, minimal chance of worm infestation and good for the soil life).

Start your Chickenwagon adventure

All our products are carefully produced in our workshop in Nistelrode, the Netherlands. We offer products for both small local entrepreneurs and large agricultural companies. With a rich standard equipment and many technical options, a Chickenwagon can be customised to suit your needs.

Every situation is unique, including yours.

That is why it is best to start by looking at the situation. Ask the questions: "what is the goal?" and "what fits the current situation?". Do you want to sell eggs recreationally, or is this going to be a nice spin-off from your farming business?

Also think about what kind of eggs you want to sell: organic or free range eggs? It's also good to think about how many hens you want to keep and what selling price per egg you want to charge.

You can answer the questions above by clicking on Calculate your payback period. When you do this you can see what the expected payback time is and which type of Chickenwagon would possibly suit you best.

Delivery

Our Chickenwagons are delivered by our regular transporter. We are always present when the Chickenwagon is delivered. When the truck arrives, we help unload the Mobile Chickenwagon. When it is on the yard we give a detailed explanation about the working of the Chickenwagon and advice about what you should pay attention to when it comes to chickens.

Find the Chickenwagon that suits you



We are here for you when you need us.

Your satisfaction is our highest priority. With us, you get fast and reliable service. Our competent and reliable service technicians, combined with our fast delivery of spare parts, ensure the best possible support in case of need.

In addition, we also offer the option of a Service and Advice contract. This means that we will visit you once a year for a check-up of the Chickenwagon. We see this as the annual MOT for your Chickenwagon.





The benefits of Chickenwagon 750

- ✓ Self-sufficient through solar panels
- ✓ Water, feed and manure storage for a week
- ✓ No destruction of fields and nature
- ✓ Fully mobile
- ✓ Excellent insulation for all seasons
- ✓ Hydraulic manure conveyor
- ✓ Farmer and Chicken Friendly

Standard equipment

- ✓ Solar panels
- ✓ Water Level meter
- ✓ Automatic outlet door
- ✓ Excretion system in the laying nests
- ✓ Fan with a temperature sensor
- ✓ Automatic feeding system

More information about chickenwagon 750? Check our website.



Chickenwagon 750



Daily activities

- ✓ Make control rounds;
- ✓ Take out the eggs;
- ✓ On average, 15 minutes of work per day.

Weekly work

- ✓ Fertiliser belt hydraulic uncoiling;
- ✓ Refill water;
- ✓ Refill feed;
- ✓ Move after a fresh patch of grass;
- ✓ On average 1.5 hours of work per week.

The Mobile Chickenwagon offers space for 768 organic or 1040 free-range laying hens.

The cart can be moved by means of an agricultural vehicle. The wide tyres under the cart ensure sufficient pressure distribution on the land. These tyres ensure that the Chickenwagon 750 is easy to manoeuvre on various types of terrain.

In the Chickenwagon 750 there are three different floors for the laying hens. The floor is equipped with a closed floor where the laying hens can scratch during the day and find access to the outside through the automatic exit doors. These exit doors are automatically controlled based on the sunset.

The cart is equipped with perches, a feeding system, drinking nipples and laying nests. Because the room is equipped with an aviary system, the manure automatically lands on the hydraulic manure belts. For the right

climate, two automatically controlled loading trays are present, which work together with the two ventilators. The trailer has six windows that provide sufficient daylight and can easily be opened. The water supply can be refilled from the outside and offers sufficient storage capacity for a week. The laying hens can take this water by means of two nipple lines with adjustable water pressure.

The laying nests are mounted on the inside. By means of the excretion netting, the laying nests are automatically closed in the evening and

opened again in the morning. When you enter the trolley, you first enter the hygiene sluice. Here you can put on boots and an overall before entering the hen house. This hygiene sluice is also where the egg belt ends. When a laying hen lays her egg, the egg rolls to the back of the egg belt. This egg belt is driven by a motor, so the eggs easily roll towards you and can be packed in trays or boxes immediately.

The manure belt can be removed by means of a shovel or tractor. Of the manure produced by the chickens, 80% ends up directly on the manure belt, which has to be removed weekly.

There is an automatic feeding system for the laying hens. This feeding system is on two levels in the aviary. And it is possible to run it up to six times a day.

There are solar panels on the roof. These solar panels provide power for the electrical equipment present. This is supported by a battery that ensures there is power 24/7.

With a PLC in the control box, you have complete control over the setting of the times. Think for example of the LED lighting, exit, and drive-out system in the laying nests. In the Chickenwagon 750 the water level is easy to read via a screen on the control box. This avoids light intrusion and minimises the growth of algae.

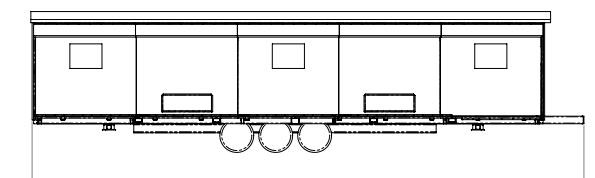
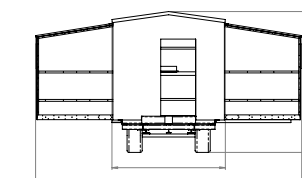
The Chickenwagon 750 is insulated by green sandwich panels. This gives the cart a beautiful appearance without compromising on durability and wear.

Possibility of folding:

The cart is designed in such a way that it can be folded during transport, when the chickens are out. As the Chickenwagon is collapsible, you are no longer tied to one meadow. Folding the cart takes about 4 hours. After collapsing, the Chickenwagon is 3 metres wide and can be moved to a new meadow.

The dimensions of Chickenwagon 750

Length= 14.75m, Height = 3.72m , Width unfolded = 7.04m , Width collapsed = 3.0m.





De voordelen van de Kippenkar 300

- ✓ Self-sufficient through solar panels
- ✓ Water, feed and manure storage for a week
- ✓ No destruction of fields and nature
- ✓ Fully mobile
- ✓ Excellent insulation for all seasons
- ✓ Hydraulic manure conveyor
- ✓ Farmer and Chicken Friendly

Standard equipment

- ✓ Steel finish (wood look)
- ✓ Solar panels
- ✓ Water Level meter
- ✓ Automatic outlet door
- ✓ Excretion system in the laying nests



More information about chickenwagon 300? Check our website.



Chickenwagon 300



Daily activities

- ✓ Make control rounds;
- ✓ Take out the eggs;
- ✓ On average, 15 minutes of work per day.

Weekly work

- ✓ Fertiliser belt hydraulic uncoiling;
- ✓ Refill water;
- ✓ Refill feed;
- ✓ Move to a fresh patch of grass;
- ✓ On average 1.5 hours of work per week.

The Mobile Chickenwagon offers space for 300 organic or 432 free-range laying hens.

The cart can be moved by means of an agricultural vehicle. The wide tyres under the cart can be adjusted in height by means of a hydraulic connection at the front of the cart. This functionality ensures that the Chickenwagon 300 is manoeuvrable on various types of terrain.

The cart can be moved by means of an agricultural vehicle. The wide tyres under the cart can be adjusted in height by means of a hydraulic connection at the front of the cart. This functionality ensures that the Chickenwagon300 is manoeuvrable on various types of terrain.

The Chickenwagon 300 has two different floors for the laying hens. The lower floor has a closed floor where the laying hens can scratch during the day and find access to the outside through the automatic exit door. This exit door

is automatically controlled based on the sunset. In addition, there are several manual doors on the lower floor, which are useful during the daily check. These doors are equipped with removable windows for extra ventilation in summer time. For the removable windows there is a convenient storage area at the rear of the Chickenwagon 300.

On the top floor are the perches, a feeding system, nipple drinkers and the laying nests. Because this floor is equipped with grids, the manure automatically lands on the hydraulic

manure belt. There are also three loading bins on this floor to ensure the right climate. These can be opened and closed manually. The water supply is easy to fill from the outside and offers enough storage capacity for a week. The laying hens can take this water by means of a nipple line with adjustable water pressure.

The laying nests are mounted on the inside. By means of the excretion netting, the laying nests are automatically closed in the evening and opened again in the morning. When you enter the trolley, you first enter the hygiene sluice. Here you can put on boots and an overall before entering the hen house. This hygiene sluice is also where the egg belt ends. When a laying hen lays her egg, the egg rolls to the back of the egg belt. This egg belt is driven by a motor, which makes it easy to roll the eggs towards you and pack them into trays or boxes.

The manure belt can be turned by means of a shovel or tractor. From the manure that the chickens make, 80% is

collected on the manure belt and this should be turned off weekly.

Feed barrels or an automatic feeding system are available for the laying hens. Both systems have a storage capacity of one week.

There are solar panels on the roof. These solar panels provide power for the electrical equipment present. This is supported by a battery that ensures there is power 24/7.

With a PLC in the control box, you have complete control over the

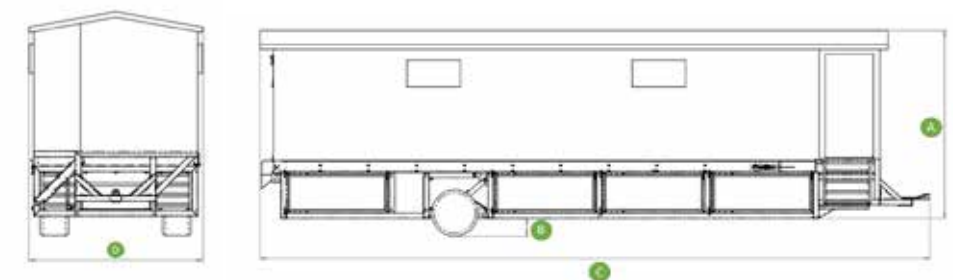
setting of times. Think for example of the LED lighting, exit, and drive-out system in the laying nests. In the Chickenwagon300 the water level is easy to read via a clock on the control box. This avoids light intrusion and minimises the growth of algae.

Because most of the seams and cracks are glued, the Chickenwagon 300 is well insulated and blood lice have little chance of success.

The Chickenwagon 300 is insulated by sandwich panels and finished with a steel wood-look finish. This gives the trailer a warm appearance without compromising on durability and wear.

The dimensions of Chickenwagon 300

A = 3,5m, B = 0,35m, C = 12,5m, D = 3m





The benefits of Chickenwagon 249

- ✓ Self-sufficient through solar panels
- ✓ Water, feed and manure storage for a week
- ✓ No destruction of fields and nature
- ✓ Fully mobile
- ✓ Excellent insulation for all seasons
- ✓ Hydraulic manure conveyor
- ✓ Farmer and Chicken Friendly

Standard equipment

- ✓ Steel finish (wood look)
- ✓ Solar panels
- ✓ Water Level meter
- ✓ Automatic outlet door
- ✓ Excretion system in the laying nests



More information about chickenwagon 249? Check our website.



Chickenwagon 249



Daily activities

- ✓ Make control rounds;
- ✓ Take out the eggs;
- ✓ On average, 15 minutes of work per day.

Weekly work

- ✓ Fertiliser belt hydraulic uncoiling;
- ✓ Refill water;
- ✓ Refill feed;
- ✓ Move to a fresh patch of grass;
- ✓ On average 1.5 hours of work per week.

The Mobile Chickenwagon 249 offers space for 249 organic or 350 free-range laying hens.

The cart can be moved by means of an agricultural vehicle. The wide tyres under the cart can be raised or lowered by means of a hydraulic connection at the front of the cart. This functionality ensures that the Chickenwagon 249 can be manoeuvred on different types of terrain.

The cart can be moved by means of an agricultural vehicle. The wide tyres under the cart can be raised or lowered by means of a hydraulic connection at the front of the cart. This functionality ensures that the Chickenwagon 249 can be manoeuvred on different types of terrain.

The Chickenwagon 249 has two different floors for the laying hens. The lower floor has a closed floor where the laying hens can scratch during the day and have access to the outside via the automatic exit door. This exit door is automatically controlled based

on the sunset. In addition, there are several manual doors on the lower floor, which are useful during the daily check. These doors have removable windows for extra ventilation in summer time. For the removable windows there is a convenient storage area at the rear of the Chickenwagon 249.

On the top floor are the perches, a feeding system, nipple drinkers and the laying nests. Because this floor is equipped with grids, the manure automatically lands on the hydraulic manure belt. There are also two loading bins on this floor to ensure the right

climate. These can be opened and closed manually. The water supply is easy to fill from the outside and offers enough storage capacity for a week. The laying hens can take this water by means of a nipple line with adjustable water pressure.

The insulated nests are mounted on the outside of the Chickenwagon 249 for easy removal of the eggs. The nest is automatically closed at night and opened again in the morning by means of an excretion netting.

The manure belt of the Chickenwagon 249 can be removed by means of a shovel or tractor. It catches up to 80% of the manure and needs to be removed weekly.

Feed barrels or an automatic feeding system are available for the laying hens. Both systems have a storage capacity of one week.

On the roof of the Chickenwagon 249 solar panels are installed to generate power for the electronic functionalities. The solar panels are supported by

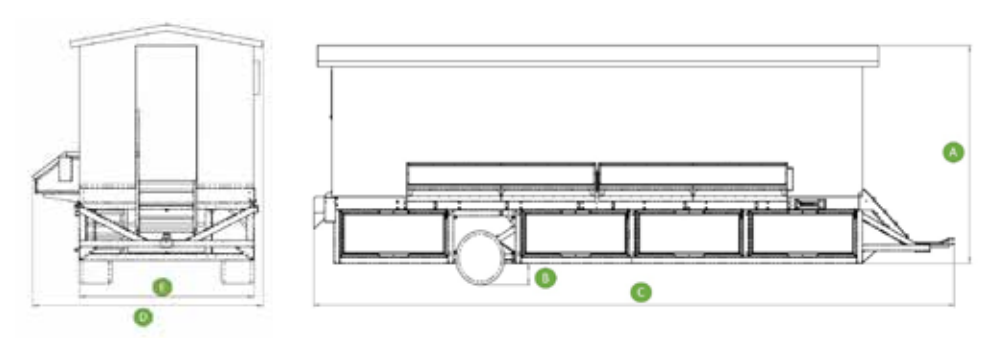
a battery that ensures that power is available 24/7. This makes the Chickenwagon 249 a self-sufficient cart.

With a PLC in the control cabinet, you have complete control over the setting of times. Think for example of the LED lighting, exit and drive-out system in the laying nests.

In the Chickenwagon 249, the water level is easy to read via a clock on the control box. This avoids light intrusion and minimises the growth of algae.

The dimensions of Chickenwagon 249

A = 3,5m, B = 0,35m, C = 11,5m, D = 3,5m, E = 2,7m





The benefits of Chickenwagon 195

- ✓ Self-sufficient through solar panels
- ✓ Water, feed and manure storage for a week
- ✓ No destruction of fields and nature
- ✓ Fully mobile
- ✓ Excellent insulation for all seasons
- ✓ Hydraulic manure conveyor
- ✓ Farmer and Chicken Friendly

Standard equipment

- ✓ Steel finish (wood look)
- ✓ Solar panels
- ✓ Water Level meter
- ✓ Automatic outlet door
- ✓ Excretion system in the laying nests



More information about chickenwagon 195? Check our website.



Chickenwagon 195



Daily activities

- ✓ Make control rounds;
- ✓ Take out the eggs;
- ✓ On average, 15 minutes of work per day.

Weekly work

- ✓ Fertiliser belt hydraulic uncoiling;
- ✓ Refill water;
- ✓ Refill feed;
- ✓ Move to a fresh patch of grass;
- ✓ On average 1.5 hours of work per week.

The Mobile Chickenwagon offers space for 195 organic or 249 free-range laying hens.

The Chickenwagon195 can be moved by a shovel or tractor. The wide tyres under the cart can be adjusted in height by means of a hydraulic connection at the front of the cart. This functionality ensures that the Chickenwagon 195 is manoeuvrable on various types of terrain.

The Chickenwagon 195 has two different floors for the laying hens. The lower floor has a closed floor where the laying hens can scratch during the day and find access to the outside through the automatic exit door. This exit door is automatically controlled based on the sunset. In addition, there are several manual doors on the lower floor, which are useful during the daily check. These doors have removable windows for extra ventilation in summer time. For the removable windows, there is a convenient storage area at the rear of Chickenwagon 195.

On the top floor are the perches, a feeding system, nipple drinkers and the laying nests. Because this floor is equipped with grids, the manure automatically lands on the hydraulic manure belt. There are also two loading bins on this floor to ensure the right climate. These can be opened and closed manually. The water supply is easy to fill from the outside and offers enough storage capacity for a week. The laying hens can take this water by means of a nipple line with adjustable water pressure.

The insulated nests are mounted on the outside of Chickenwagon 195 so that the eggs can be easily removed. The nest is automatically closed at night and opened again in the morning by means of an excretion netting.

The manure belt of the Chickenwagon 195 can be removed by means of a shovel or tractor. It catches up to 80% of the manure and has to be turned weekly. The cart is equipped with feed barrels or an optional automatic feeding system. Both systems have a capacity of one week.

On the roof of the Chickenwagon 195 solar panels are installed to generate power for the electronic functionalities. The solar panels are supported by a battery that ensures that power is available 24/7. This makes the Chickenwagon 195 a self-sufficient cart.

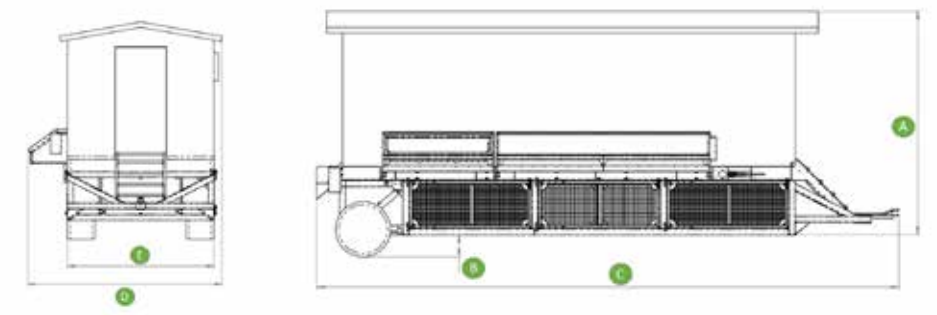
With a PLC in the control cabinet, you have complete control over the setting of times. Think for example of the LED lighting, exit and drive-out system in the laying nests.

In the Chickenwagon195, the water level is easy to read via a clock on the control box. This avoids light intrusion and minimises the growth of algae.

Because most of the seams and cracks are glued, the Chickenwagon 195 is well insulated and blood lice have little chance of success. The Chickenwagon is insulated by sandwich panels and finished with a steel wood-look finish. This gives the trailer a warm appearance without compromising on durability and wear.

The dimensions of Chickenwagon 195

A = 3,5m, B = 0,35m, C = 9,1m, D = 3,5m, E = 2,7m





The benefits of Chickenwagon 100

- ✓ Self-sufficient through solar panels
- ✓ Water, feed storage for a week
- ✓ Improved welfare for chickens
- ✓ No destruction of fields and nature
- ✓ Fully mobile
- ✓ Excellent insulation for all seasons
- ✓ Collection of manure

Standard equipment

- ✓ Steel finish (wood look)
- ✓ Solar panels
- ✓ Water Level meter
- ✓ Automatic outlet door
- ✓ Excretion system in the laying nests
- ✓ Fan with a temperature sensor



More information about chickenwagon 100? Check our website.



Chickenwagon 100



Daily activities

- ✓ Make control rounds;
- ✓ Take out the eggs;
- ✓ On average, 15 minutes of work per day.

Weekly work

- ✓ Refill water;
- ✓ Refill feed;
- ✓ Move to a fresh patch of grass;
- ✓ On average, 1 hours of work per week.

Monthly work

- ✓ Fattening.

This Mobile Chickenwagon 100 offers space for 100 organic or 150 free-range laying hens.

The Chickenwagon 100 is smaller in size and can be moved by a (small) agricultural vehicle. The laying nest is insulated and mounted on the outside. This makes it easy to take out the eggs. The drive-through gauze in the laying nests ensures that the nests are automatically closed in the evening and opened again in the morning.

On the inside of the cart you will find the perches, feed troughs, drinking nipples and access to the laying nests. In the wall of the Chickenwagon 100 is a loading tray mounted that provides a good climate. This can be opened and closed manually. There is also a water supply with sufficient capacity for a week, which can easily be topped up from the outside. The water from this supply can be taken up by the laying hens by means of a nipple line with adjustable water pressure. At the back

of the trailer there is an automatic exit door which opens in the morning at a fixed time and closes automatically at sunset.

There are solar panels on the roof of the Chickenwagon 100 that provide power for the electronic equipment. This is supported by a battery that ensures there is power 24/7.

The control box is equipped with a PLC so that you have complete control

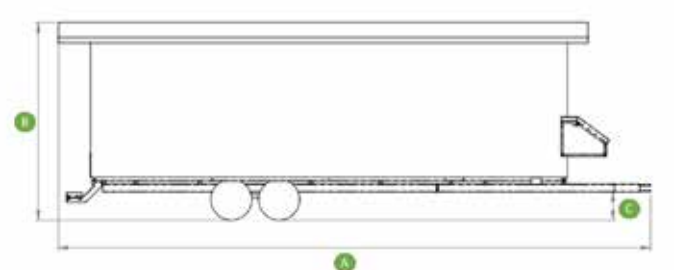
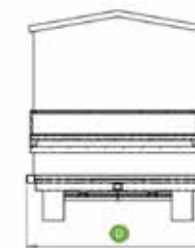


over the setting of times. You can think of LED lighting, discharge, and the exorcism system in the laying nests. The water level is also easy to read via a clock on the control box so that the water system can remain closed. In this way, light is avoided, which results in minimal growth of algae.

The Chickenwagon 100 is insulated by sandwich panels and finished with a steel wood-look finish. This gives the trolley a warm appearance without compromising on durability and wear.

The dimensions of Chickenwagon 100

A= 9,5m, B= 2,7m, C=0,55m, D=2,6m





The benefits of Chickenwagon 50

- ✓ Self-sufficient through solar panels
- ✓ Water, feed storage for a week
- ✓ Improved welfare for chickens
- ✓ No destruction of fields and nature
- ✓ Fully mobile
- ✓ Excellent insulation for all seasons
- ✓ Collection of manure

Standard equipment

- ✓ Steel finish (wood look)
- ✓ Solar panels
- ✓ Water Level meter
- ✓ Automatic outlet door
- ✓ Excretion system in the laying nests
- ✓ Fan with a temperature sensor



More information about chickenwagon 50? Check our website.



Chickenwagon 50



Daily activities

- ✓ Make control rounds;
- ✓ Take out the eggs;
- ✓ On average, 15 minutes of work per day.

Weekly work

- ✓ Refill water;
- ✓ Refill feed;
- ✓ Move to a fresh patch of grass;
- ✓ On average, 1 hour of work per week.

Monthly work

- ✓ Fattening.

The Mobile Chickenwagon 50 offers space for 50 organic or 80 free-range layers.

The Chickenwagon 50 is a compact cart and can be moved by a (small) agricultural vehicle. The laying nest is insulated and mounted on the outside, which makes it easy to take out the eggs. The extrication mesh in the laying nests ensures that the nests are automatically closed in the evening and opened again in the morning.

On the inside of the cart are the perches, feed troughs, drinking nipples and access to the laying nests. In the wall of the Chickenwagon 50 is a loading tray mounted that provides a good climate. This can be opened and closed manually. There is also a water supply with sufficient capacity for a week, which can easily be topped up from the outside. The water from this supply can be taken up by the laying hens by means of a nipple line with adjustable water pressure. At the back of the trailer there is an automatic exit

door which opens in the morning at a fixed time and closes automatically at sunset.



There are solar panels on the roof of the Chickenwagon 50 that provide power for the electronic equipment. This is supported by a battery that ensures there is power 24/7.

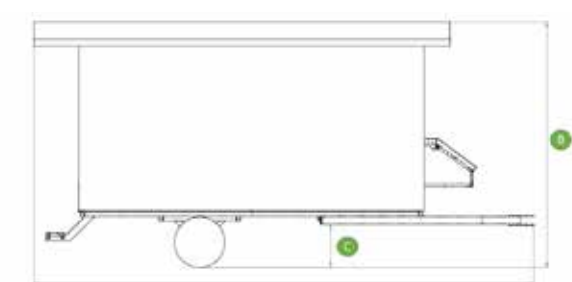
The control box is equipped with a PLC so that you have complete control over the setting of times. You can think of LED lighting, discharge, and the exorcism system in the laying nests. The water level is also easy to read via a clock on the control box so that the water system can remain closed. In this way, light is avoided, which results in minimal growth of algae.

The Chickenwagon 50 is insulated by sandwich panels and finished with a steel wood-look finish. This gives the trolley a warm appearance without compromising on durability and wear.



The dimensions of Chickenwagon 50

A = 6,5m, B = 2,7m, C = 0,55m, D = 2,6m





The benefits of meatwagon 249

- ✓ Water, feed storage for a week
- ✓ No destruction of fields and nature
- ✓ Fully mobile
- ✓ Excellent insulation for all seasons
- ✓ Farmer and Chicken Friendly

Standard equipment

- ✓ Steel finish (wood look)
- ✓ Solar panels
- ✓ Water Level meter
- ✓ Automatic outlet door
- ✓ Fan with a temperature sensor



More information about meatwagon 249? Check our website.



Meatwagon 249



Daily activities

- ✓ Make control rounds.

Weekly work

- ✓ Refill water;
- ✓ Refill feed;
- ✓ Move to a fresh patch of grass

The Mobile meatwagon offers space for 249 organic broilers, rearing layers or cockerels. The exact number of broilers depends on the final weight of the birds. In the Mobile cockerel cart, 21 kg per square metre live weight may be kept until the end of the round.

The meatwagon 249 has a closed floor where the broilers can scratch during the day and have access to the outside via the automatic exit door. This exit door is automatically controlled based on sunset.

The meatwagon 249 contains perches, a feeding system, nipple drinkers, a fan and a heating plate. The coop can be sprinkled with grit to provide a comfortable surface for the chicks. To

provide the right climate, there are two loading bins and a fan with temperature sensor to ensure that fresh air enters. The loading trays can be opened and closed manually. The chicks can take in water by means of a nipple line in the cart, the water pressure of which is adjustable. During the first weeks, the trolley has to be connected to a water pipe so that the chicks have access to fresh drinking water. After that, a storage tank is provided with a

storage capacity of one week. The cart is equipped with feeding troughs or an optional automatic feeding system. Both systems have a storage capacity of one week.

The meatwagon 249 has a valve that makes it easy to remove the manure periodically.

On the roof of the trolley there are solar panels that supply the power for the electronic functionalities. The solar panels are supported by a battery that ensures there is power 24/7. This makes the meatwagon self-sufficient.

With a PLC on the control box, you have complete control over the setting of times. Think for example of the LED lighting, outlet, feeding system and fan.

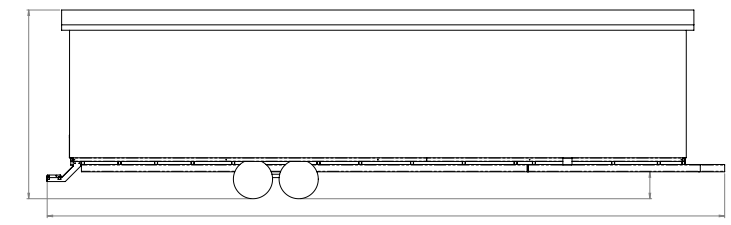
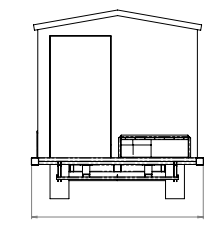
In the cart, the water level can be easily read via a clock on the control box. This avoids light incidence and minimises the growth of algae. Because the chickens do not need an outlet during the first

few weeks, the cart can be placed near water and electricity. This is because there is a heater in the cart for the first few weeks.

The cart is insulated by sandwich panels and finished with a steel wood-look finish. This gives the trolley a warm appearance without compromising its durability and wear.

The dimensions of Chickenwagon 249

Length = 11.2m, Width = 2.8m, Height = 3.1m, Ground space = 0.4m





With a rich standard equipment and a lot of optional technical features, a Chickenwagon can be customised entirely to your wishes. Below you will find an overview of all the technical options and you can see on which types the option is available.

Possible options



Electric fence and nets

► Applicable to all types

The energiser is connected to the solar panels, which means that power can be supplied to the fencing nets all year round. The advantage of having power on the nets is that the chickens do not go under the fence.



Feeding hopper with hydraulic auger

To fill the feed hopper of the automatic feeding system, there are two types of feed hoppers. Both are fitted with a hydraulic feed auger. The feed chute at the back of the Chicken Trolley is at a height of 2.75m. To reach this height, a horizontal or vertical feed trough can be used. In this way, the feed hopper can be filled with both a shovel and a tractor.



Implement behind the tractor

Implement for behind the tractor with three point connection. Includes vertical hydraulic auger and IBC container with 12 volt pump to top up the water supply. The great advantage of this implement is that the water and feed can be filled at the same time. If a front loader is present, the manure can also be taken along at the same time, which means that a transport after the Chicken Trolley is necessary once a week for the weekly work.



10. Message for failure

► Applicable to all types

Screen with GSM module in the switch box. This system ensures that an SMS is sent to the mobile phone in the event of a fault.



Steel paddle boards instead of wood

► Applicable to all types

Steel paddle-shaped perches have a longer lifespan and less contact surface, thus reducing the risk of blood lice.



Levelling

► Applicable to types 195/ 249/ 300 and 750

To ensure that the Mobile Chicken Trolley stands upright even on hilly terrain, it has four hydraulic support legs that can be easily operated via the hydraulics of the tractor or shovel.



Dimmable lighting

► Applicable to all types

In the upper area, the lights are dimmable and there is a possibility to simulate the sunrise. In the scavenging area below the cart, two additional lamps are placed.



Feed rings

► Applicable to all types with feed drums.

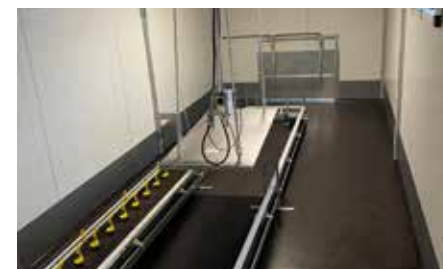
With these feed rings the chickens get an individual eating place, which reduces the amount of food spilt.



Handrail and fence

► Available on types 195/ 249/300/750

Handrail on the stairs and fence in front of the first hole at the entrance.



Heating infrared panel chicks

Can be carried out on the hand cart. This infrared panel ensures a constant temperature for the chicks by means of a thermostat that can be set to the desired degree.



Egg transport box

In this red box, 360 eggs can be easily transported. (Including 12 plastic trays).



Automatic feeding system

► Executable on types 195/ 249/ 300/ 750 and Meat wagon 249

An automatic feeding system can be chosen to replace the feed barrels. This system feeds the chickens at least six times a day. The feeding times can be easily set on the computer. The major advantages of this automatic feeding system are the ease of use; the feed stock can be filled from outside, the chickens have more distractions and the feed chain is eaten daily.



Sunshade

► Executable on types 195/ 249/300

With this option, the chickens have extra shade and a better escape route. This sunshade can be folded up against the Chicken Trolley when it needs to be moved on the road.



Fan with temperature sensor

► Executable on all types

The fan works with a temperature sensor and automatically switches on or off when the temperature is above or below the set temperature.

More information about the extra options? Check our website.





Wijkamp Farming Solutions B.V.

Maxend 47 a

5388 TW Nistelrode The Netherlands

Tel: +31 (0) 412 74 80 08

Whatsapp +31 (0) 6 43 69 75 06



FACEBOOK



INSTAGRAM

