

A

AUGERS





AUGERS

Wide range

LANDMECO offers a very wide auger range. The augers are built from standard components that can be combined and used for various auger sizes.

This makes it very simple to design precisely the right auger for specific tasks.

FLEX AUGERS



LANDMECO flex augers are the most flexible solution for transporting loose material whether it be feed, grain or wood pellets. The auger pipe is made of white, durable plastic, which provides the pipe with a smooth, long-lasting inner surface. Least possible friction is thus ensured.

The hardened spiral of flat spring steel is designed to ensure least possible damage to the material during transport while at the same time maximising auger capacity. The pipe and inlet are completely sealed, thus ensuring that the material is effectively protected against the surrounding environment during transport. Augers can therefore be installed outdoors, either suspended above ground or buried in underground channels, without problems.

Inlet & outlet

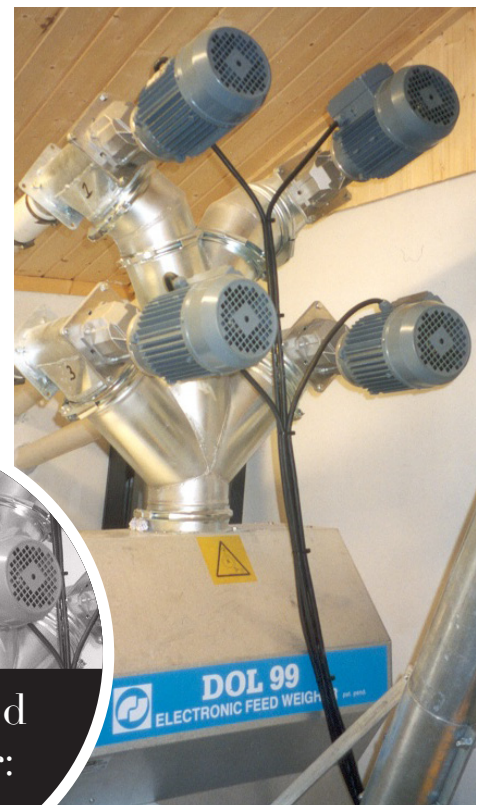
Both the auger inlet and the outlet beside the geared motor are made of all-welded galvanised steel. Both can be mounted on the flex auger in precisely the direction required for the specific task. At the inlet, the auger is guided by a powerful ball bearing. Depending on the material to be transported, a limiting shaft can be built into the auger to prevent overloading. Both inlet and outlet are equipped with OK 160 mm connection, ensuring easy connection to other equipment. Additional inlets and outlets can be fitted as required.

Installing flex augers

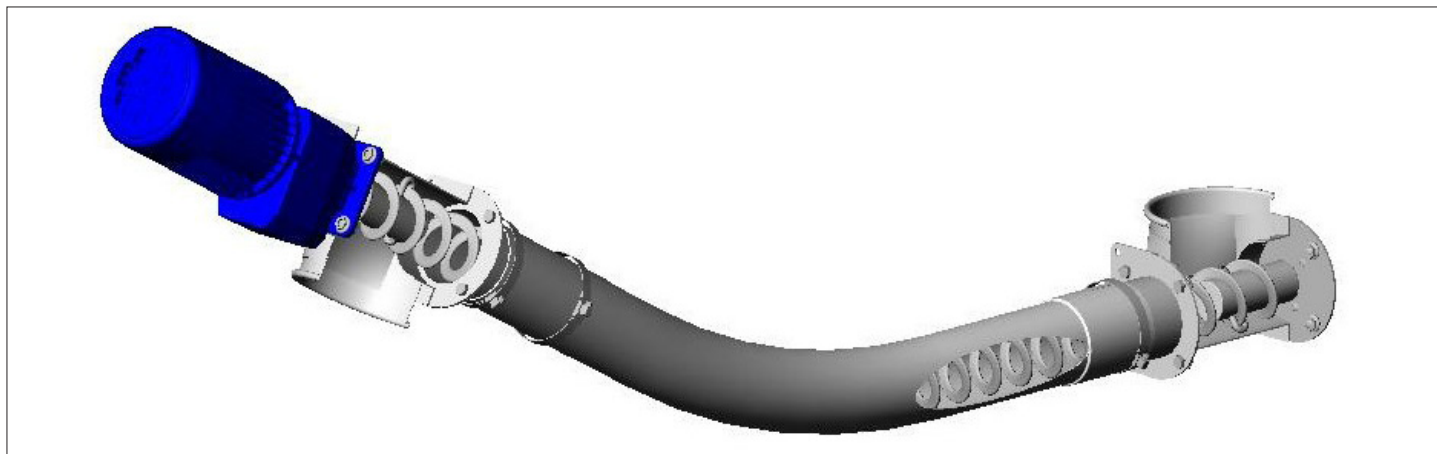
As standard, all casings, both straight and curved, are supplied with a connector attached to one end. If these fitted connectors are not suitable, loose connectors are also available. Pipes are joined using stainless clamps.

The geared motor is an integrated unit with closed oil bath gear. It requires a minimum of maintenance and ensures a long lifetime.

Geared motor:



FLEX AUGERS



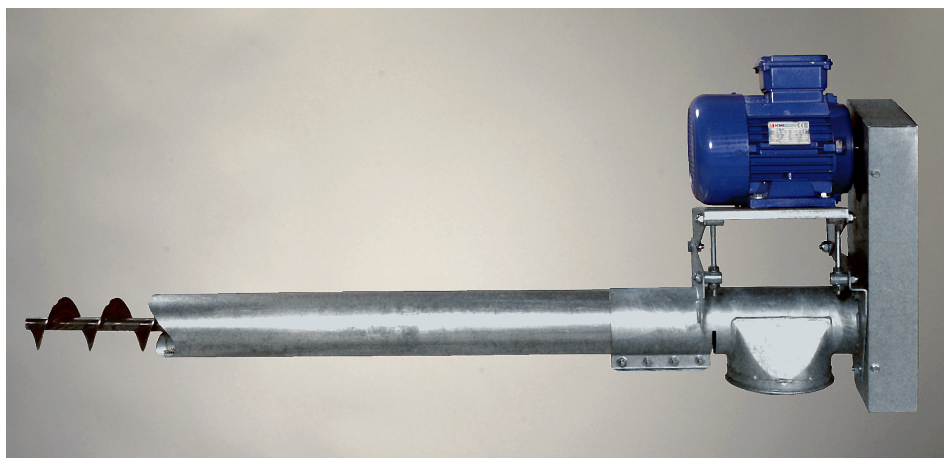
Capacity

It is highly variable, and depends on the material to be transported, auger pitch and choice of spiral.

Usually, the following applies:

A 75 mm auger casing has a capacity of 1100-1500 kg per hour. Max. pellet diameter is 8 mm. A 90 mm auger casing has a capacity of 2000-2400 kg per hour. Max. pellet diameter is 10 mm.

FIXED AUGERS



The fixed augers consist of a 102 mm galvanised steel pipe and a welded spiral. Fixed augers are supplied with OK 160 mm in- and outlets, and are belt driven.

The main advantage of fixed augers is that their capacity is considerably greater than that of flex augers. The main disadvantage of fixed augers is that they are more difficult to install because they can only run in straight lines or at angles.

ACCESSORIES

LANDMECO flex auger design allows the installation of extremely long augers, and in extreme cases these can be connected to additional augers for continued transport.

The wide range of outlets for LANDMECO flex augers is designed to meet all possible requirements (see back page). On request, LANDMECO can also supply mechanical or electronic weighers for use with the augers.



TECHNICAL SPECIFICATIONS

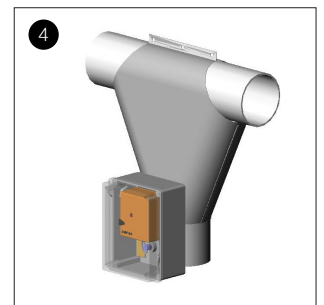
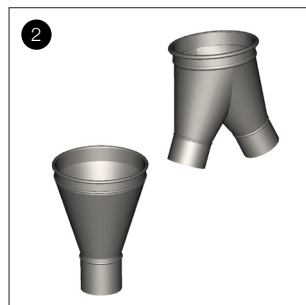
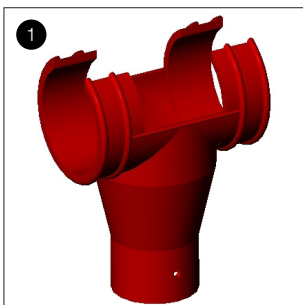
TECHNICAL DATA FLEX AUGER

Flex spiral, 75 mm	Diam. 60x40x36 mm, 4,3x11,7 mm special steel
Flex spiral, 90 mm	Diam. 75x53x47 mm, 4,3x14,0 mm special steel
Flex spiral, 110 mm	Diam. 86x60x58 mm, 4,3x14,0 mm special steel
Auger pipe, 75 mm	Wall thickness 3.6 mm
Auger pipe, 90 mm	Wall thickness 4.0 mm
Auger pipe, 110 mm	Wall thickness 5,6 mm
Elbow, 75 mm	Wall thickness 3.6 mm, 60°
Elbow, 90 mm	Wall thickness 4.3 mm, 60°
Elbow, 110 mm	Wall thickness 5,3 mm, 60°
Geared motor	1.1 kW (3x380V), 1400/300 rpm

TECHNICAL DATA FIXED AUGER

Fixed spiral, 102 mm	Diam. 85.0 mm, pitch 85.0 mm
Auger pipe, 102 mm	Wall thickness 1.5 mm
Electric motor for belt drive	1,1 kW 1400 r/min or 2,2 kW 1400 r/min

1. Extra outlet, plastic, 75/90/110 mm.
2. Reduction adapter, OK 160-75 mm, single/double two-way.
3. Extra 160 mm attachable outlet.
4. Feed outlet with electric valve, 75/90 mm, for accurate dosage of required quantities in each feed tray.



See also LANDMECO brochures on, for example:
(LANDMECO retains the right to alter specifications without notice.)



PAN FEEDING



CHAIN FEEDING



BREEDING STOCK

AGENT

farmtec®

Tisová u Jistebnice 326, 391 33 Jistebnice, Tel.: +420 381 491 111, Fax: +420 381 491 112, www.farmtec.cz, farmtec@farmtec.cz