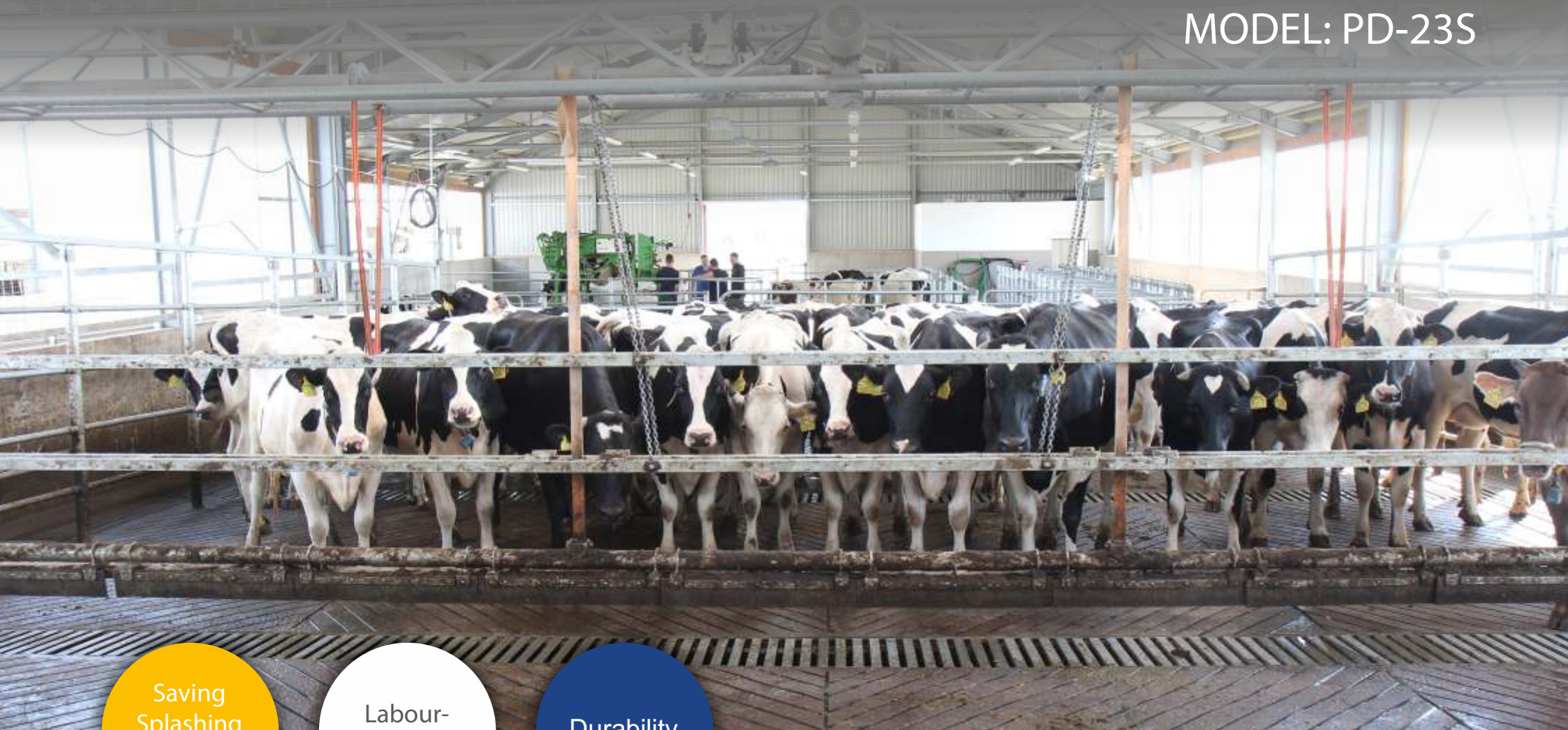


Cow pusher with a manure scraper

MODEL: PD-23S



Saving
Splashing
Water

Labour-
Saving

Durability

 **farmtec**[®]

The cow pusher with manure scraping function is a metal structure separating a group of cows in front of the milking parlour (holding pen). The structure activates behind the last cow in the group and gently pushes the entire group towards the milking parlour. An electric motor ensures the cow pusher's movement along the channel. After the last cow in the group enters the milking parlour, the staff picks up the pusher by pressing the corresponding button on the control panel. The pusher structure passes over the holding pen in a raised position, over the heads of the next group of animals waiting to enter the milking parlour, and moves down behind them.

The bottom structure of the cow pusher with manure scraper is additionally equipped with blades. When moving backwards away from the milking parlour and in the absence of animals and staff, the pusher can clean the floor from manure using the blades, by pushing it into the grid slots or into the manure channels.

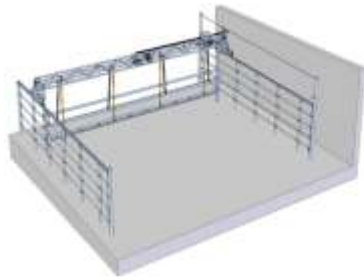
The cow pusher is controlled by the operator or milking operator, directly from the milking parlour. The pusher's presence significantly speeds-up the process of pushing animals into the milking parlour, reduces the animals' stress associated with the staff activities, and saves on labour force. Among other things, the cow pusher with a manure scraping function helps significantly to reduce water consumption when cleaning the holding pen.

If the cow pusher encounters an obstacle (animal or rubber stop at the end of the channel), the electric motor switches off based on the limit switch signal. After removing the obstacle (the animal leaves) or by manually switching the direction of the movement (the pusher reaches the stop), the pusher continues to move in the specified direction.

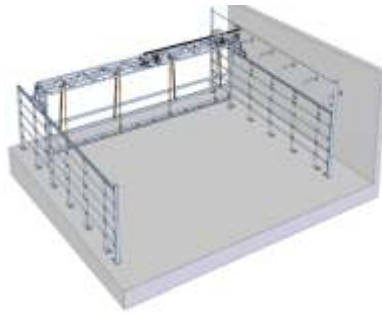
The cow pusher is equipped with an electric buzzer signalling its movement towards the milking parlour.



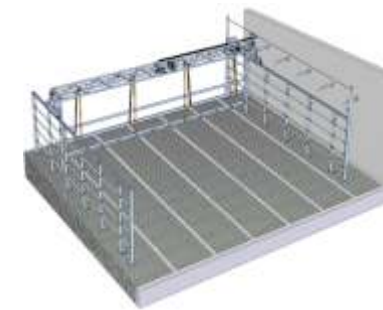
INSTALLATION VARIANTS WITH REGARD TO THE FLOOR SURFACE



INSTALLATION
INTO CONCRETE
FLOOR



INSTALLATION
ONTO CONCRETE
FLOOR



INSTALLATION
ON A CONCRETE
GRID

SIMPLE OPERATION

The cow pusher comes with several control panels, which, for the convenience of the employees, are placed both in the holding pen and in the milking parlor. The main control panel P6Z controls all the functions of the cow pusher. Generally, it is placed in the entrance of the holding pen and is out of reach of the dairy cows.

There are also auxiliary control panels, which are located in the milking parlor (D2Z panel), as well as in the aisle between the holding pen and the milking parlor (C3Z panel). The auxiliary control panels have more limited control functions than the main one, but every each of them can stop the cow pusher in any position.

BASIC TECHNICAL DATA

Standard range of pusher axial width dimensions (channel axis):	3,000 – 11,800 mm
Maximum channel length:	25,000 mm
Height from the holding pen floor:	3,090 mm
Maximum slope of the holding pen floor:	4°
Holding pen gate height:	1,960 mm
Channel height:	2,000 mm
Total weight up to:	1,400 kg (type 11,800 mm)
Travel speed:	4 m/min.





FARMTEC a.s.,
Tisová 326, 391 33 Jistebnice
Czech Republic
Mgr. Iryna Kukovich, e-mail: ikukovich@farmtec.cz mob.: +420 606 040 280
Ing. Jan Krامل, e-mail: jkrامل@farmtec.cz mob.: +420 702 226 841



farmtec[®] *www.farmtec.cz*